

REV.  
D

SAE AS1717

FEDERAL SUPPLY CLASS  
4730

RATIONALE

AS1717D HAS BEEN REAFFIRMED TO COMPLY WITH THE SAE FIVE-YEAR REVIEW POLICY.

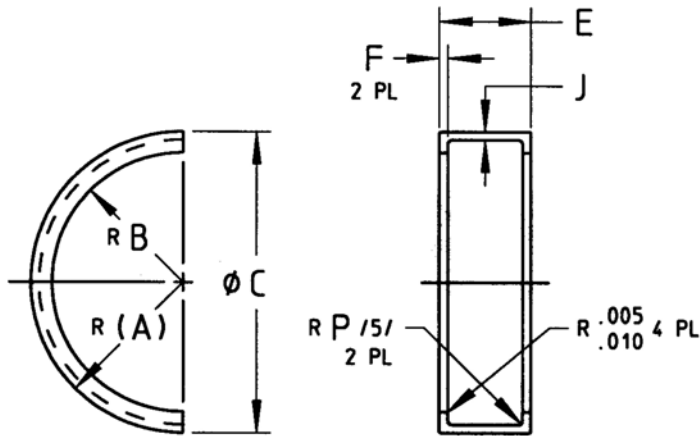


FIGURE 1 - CONFIGURATION FOR SIZES 08 AND 10 (HALF RETAINER SHOWN)

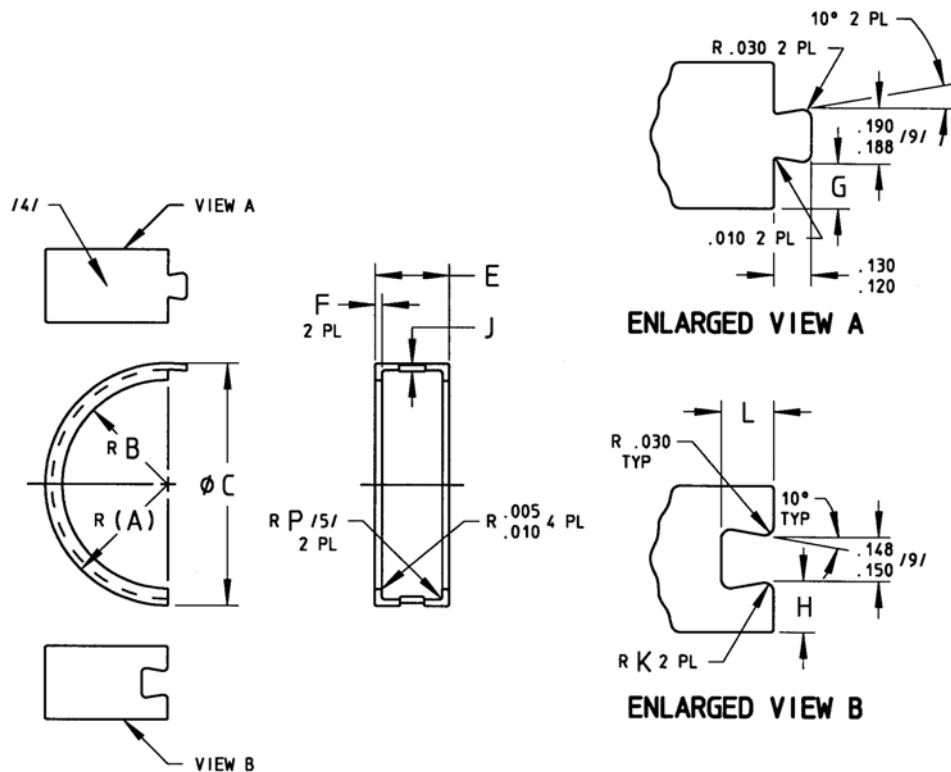
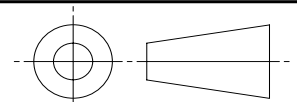


FIGURE 2 - CONFIGURATION FOR SIZES 12 THROUGH 72 (HALF RETAINER)

SAE values your input. To provide feedback  
on this Technical Report, please visit  
<http://www.sae.org/technical/standards/AS1717D>

THIRD ANGLE PROJECTION



CUSTODIAN: G-3/G-3A

PROCUREMENT SPECIFICATION: /3/ AS1710

**SAE Aerospace**  
An SAE International Group

**AEROSPACE STANDARD**

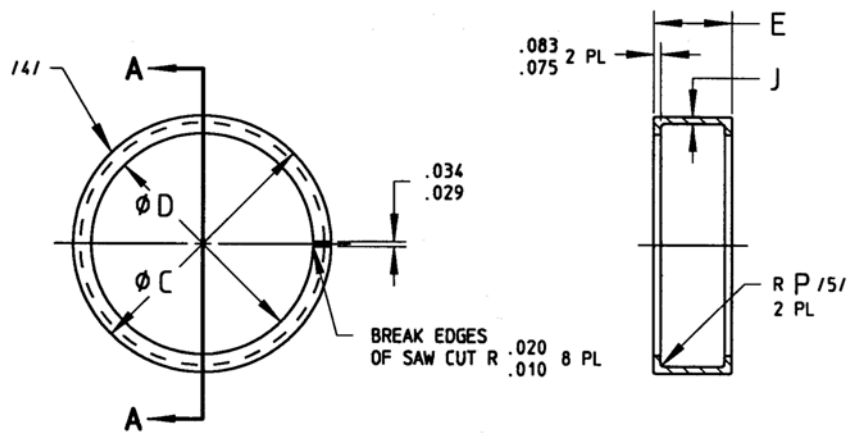
RETAINER, COUPLING, FLEXIBLE,  
VARIABLE CAVITY, THREADED  
FERRULE TYPE TUBE ENDS

**SAE AS1717**  
SHEET 1 OF 4

**REV.  
D**

SAE Technical Standards Board Rules provide that: "This report is published by SAE to advance the state of technical and engineering sciences. The use of this report is entirely voluntary, and its applicability and suitability for any particular use, including any patent infringement arising therefrom, is the sole responsibility of the user." SAE reviews each technical report at least every five years at which time it may be revised, reaffirmed, stabilized, or cancelled. SAE invites your written comments and suggestions.

ISSUED 1982-05 REVISED 2006-08 REAFFIRMED 2013-01



**SECTION A-A**

FIGURE 3 - CONFIGURATION FOR SIZES 80 AND 88 (FULL RETAINER)

TABLE A1 - COUPLING RETAINER DIMENSIONS

BASIC NO. AS1717 SIZE CODE	(TUBE SIZE)	(A)	B +.003/-.001	C ±.004	D +.006/-.000	E +.000/-.005	F +.003/-.005	G +.002/-.000	H +.000/-.002
-08	.500	.398	.323	.797	-	.415	.040	-	-
-10	.625	.461	.385	.922	-	.415	.040	-	-
-12	.750	.566	.456	1.132	-	.435	.045	.121	.143
-16	1.000	.696	.581	1.392	-	.495	.045	.151	.173
-20	1.250	.821	.706	1.641	-	.495	.045	.151	.173
-24	1.500	1.005	.831	2.010	-	.535	.045	.171	.193
-28	1.750	1.130	.956	2.260	-	.535	.045	.171	.193
-32	2.000	1.260	1.083	2.520	-	.535	.061	.171	.193
-36	2.250	1.385	1.208	2.770	-	.535	.061	.171	.193
-40	2.500	1.510	1.333	3.020	-	.535	.061	.171	.193
-44	2.750	1.635	1.458	3.270	-	.535	.061	.171	.193
-48	3.000	1.752	1.583	3.503	-	.535	.061	.171	.193
-56	3.500	2.002	1.833	4.003	-	.607	.061	.207	.229
-64	4.000	2.256	2.087	4.512	-	.633	.061	.220	.242
-72	4.500	2.565	2.338	5.129	-	.627	.061	.217	.239
-80	5.000	-	-	5.636	5.188	.837	-	-	-
-88	5.500	-	-	6.136	5.688	.847	-	-	-